



**CADDY CORPORATION**

Food Service Equipment

Air Systems

# HydroSave Round Waste Collector

**HydroSave**

PROJECT:

## Round Waste Collector

LOCATION:

**1. Water Usage Savings**

- Recirculating water reduces fresh water and sewage costs
- Unit is equipped with accurate float sensor to ensure no overflow of water

**2. Design Flexibility**

- Trough feed or free-standing configuration
- Side gushers installed in the waste trough for handsfree pre-scrapping, reducing excessive food soiled in the dishes for subsequent washing by the dish machine
- Large inlet to accommodate steep sloped trough to drive the food waste down the unit

**3. Large Capacity**

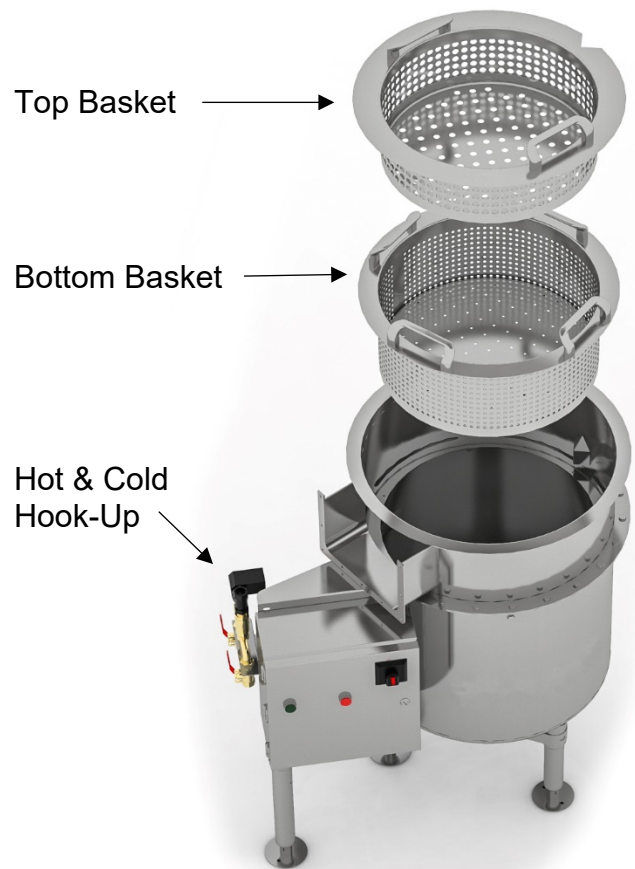
- Innovative 2-tiered design to handle large volume of food waste with multiple basket strainers, making it easier for the operator to swap the basket during the operation

**4. Easy of Use**

- One push button operation with water filled to the right level to start the operation

**5. Powerful Robust Design**

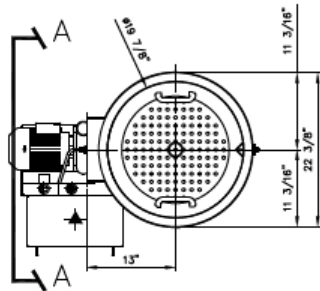
- Type 300 series stainless, 14 gauge stainless steel construction
- Heavy duty stainless steel centrifugal pump and impeller
- Flow rates 70 gallon per minute

**CADDY CORPORATION**

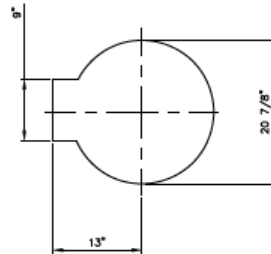
509 Sharptown Road  
Bridgeport, NJ 08014-0345  
Tel: 856-467-4222  
Fax: 856-467-5511  
[www.caddycorp.com](http://www.caddycorp.com)

## HydroSave

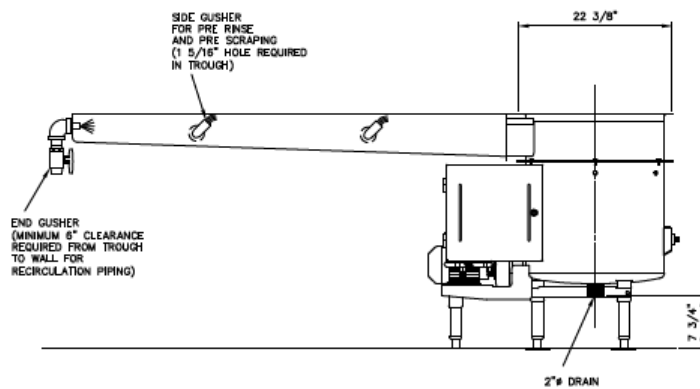
### Round Waste Collector



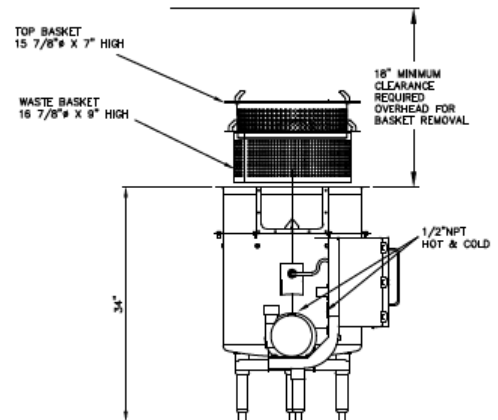
**PLAN VIEW**



**TABLE CUT OUT DETAILS**

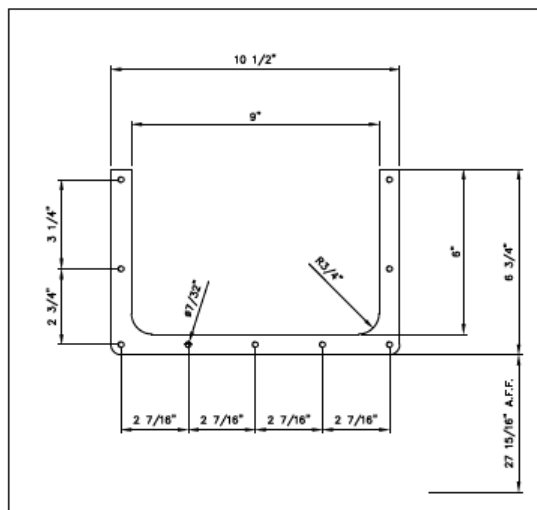


**TROUGH COLLECTOR DETAILS WITH TROUGH**

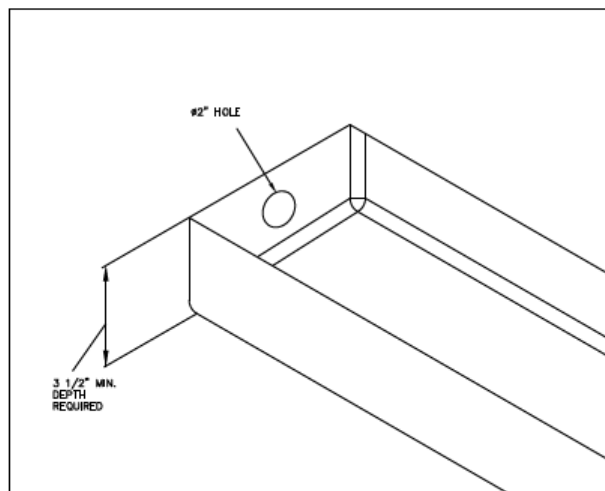


**SECTION A-A**

## TROUGH FLANGE DETAILS

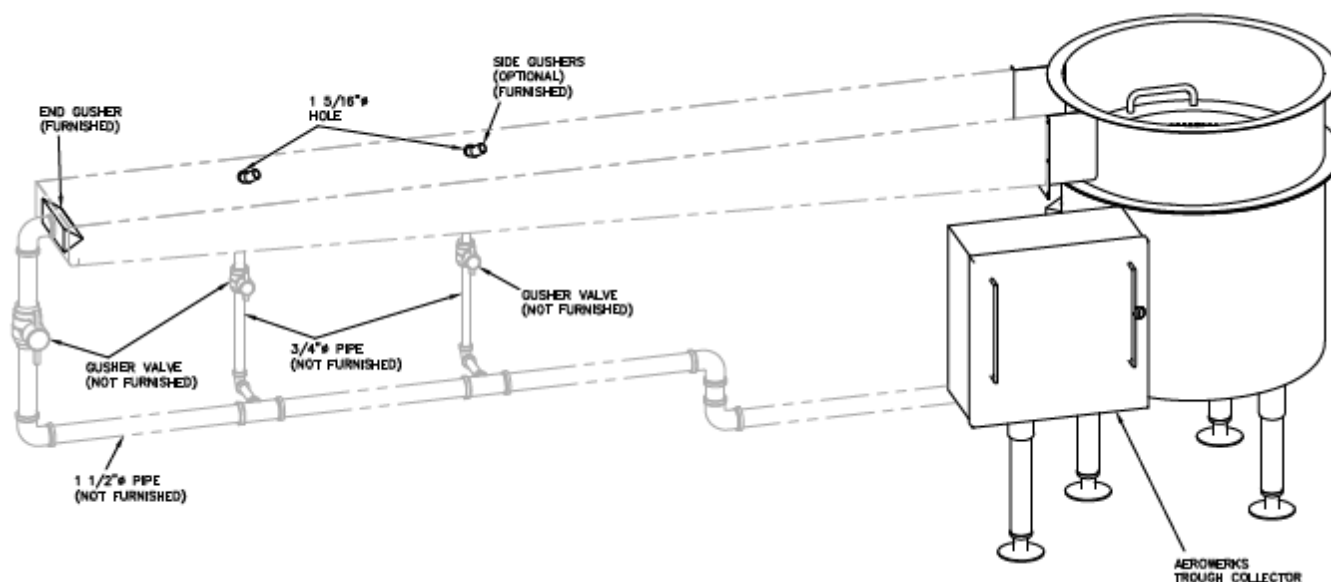


## END GUSHER CUT OUT DETAILS



**HydroSave**

## Round Waste Collector

**RECIRCULATION PLUMBING DETAILS  
(NOT FURNISHED)****RECIRCULATION PLUMBING NOTES:**

- Recirculation pipe under the table to HydroSave Waste Collector must be done by plumbing contractor.
- There must be minimum 6" clearance from wall to trough for recirculated pipe.
- A 1 1/2" gusher valve must be installed to regulate the flow of the end gusher.
- A 3/4" gusher valve for each side gusher (optional) must be installed to regulate the flow of the side gushers.
- Make all plumbing connections in accordance with national and local plumbing codes.

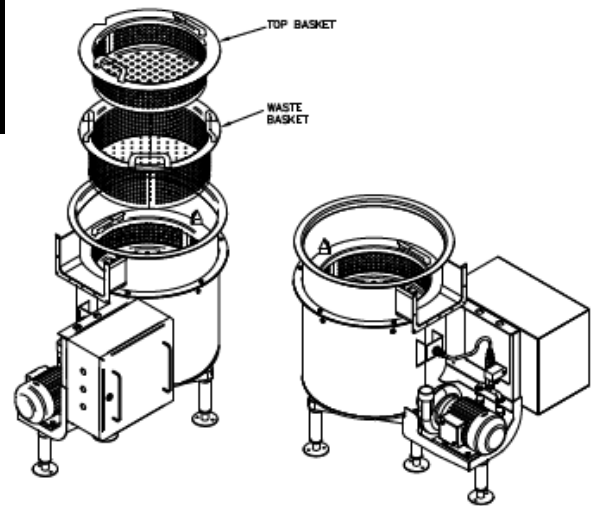
**ELECTRICAL SPECIFICATION**

AVAILABLE POWER SUPPLY	120V/30A/1Ø	208V/15A/1Ø	208V/15A/3Ø	480V/15A/3Ø
MOTOR H.P.	1.1/1.5	1.1/1.5	1.1/1.5	1.1/1.5
FULL LOAD (A)	22	11	8.1	4.6
MAX OVER CURRENT PROTECTION (A)	30	15	15	15
SELECTOR	<input type="checkbox"/>	<input type="checkbox"/>	<input type="checkbox"/>	<input type="checkbox"/>

## HydroSave

### Round Waste Collector

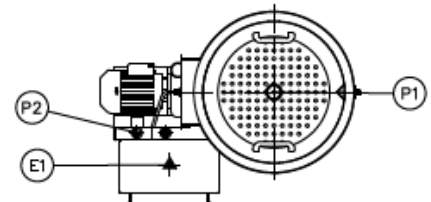
- WATER TIGHT CABLING
- ELECTRICAL SHOCK PREVENTION
- MOTOR WITH OVERLOAD PROTECTION
- 24VDC LOW VOLTAGE CONTROL CIRCUIT



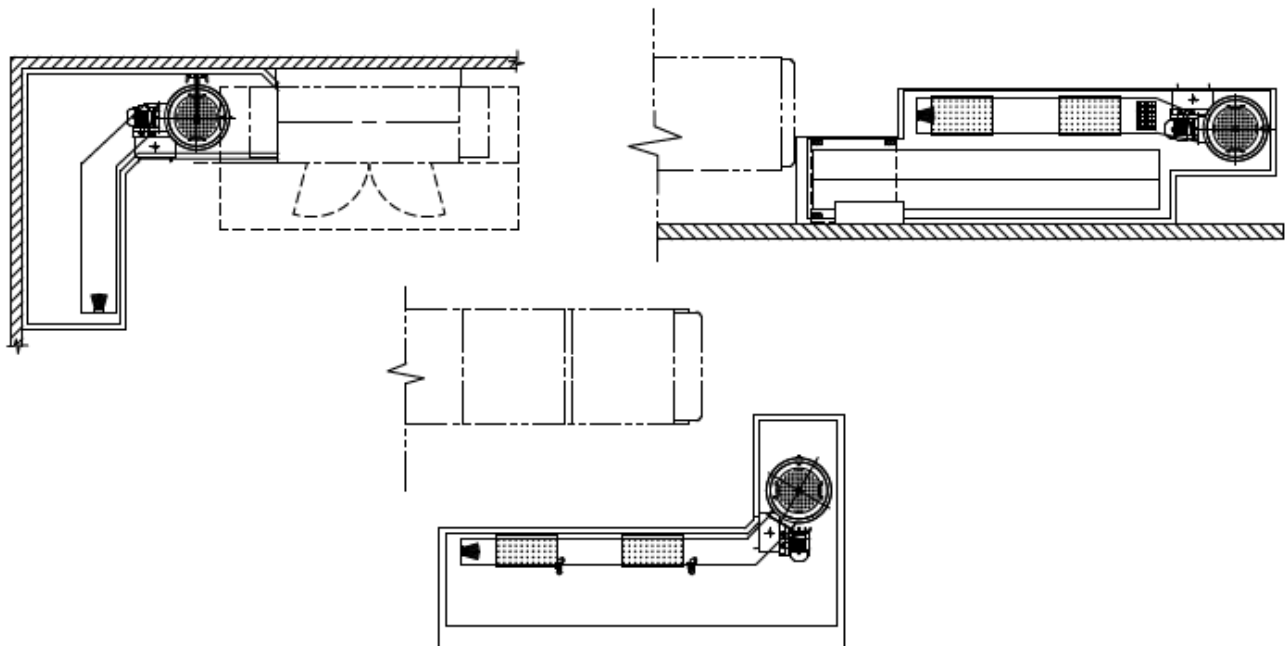
ISOMETRIC VIEWS

### PLUMBING & ELECTRICAL CONNECTIONS

P1	2" DIA. DRAIN
P2	1/2" DIA. HOT & COLD WATER SUPPLY
E1	WASTE COLLECTOR ELECTRICAL POWER



### TYPICAL HYDROSAVE WASTE COLLECTOR INSTALLATION



15'-0" LONG & 12" WIDE TROUGH WITH SIDE GUSHERS SPACED 3'-0" - 4'-0" APART TO ACCOMMODATE OPERATORS.